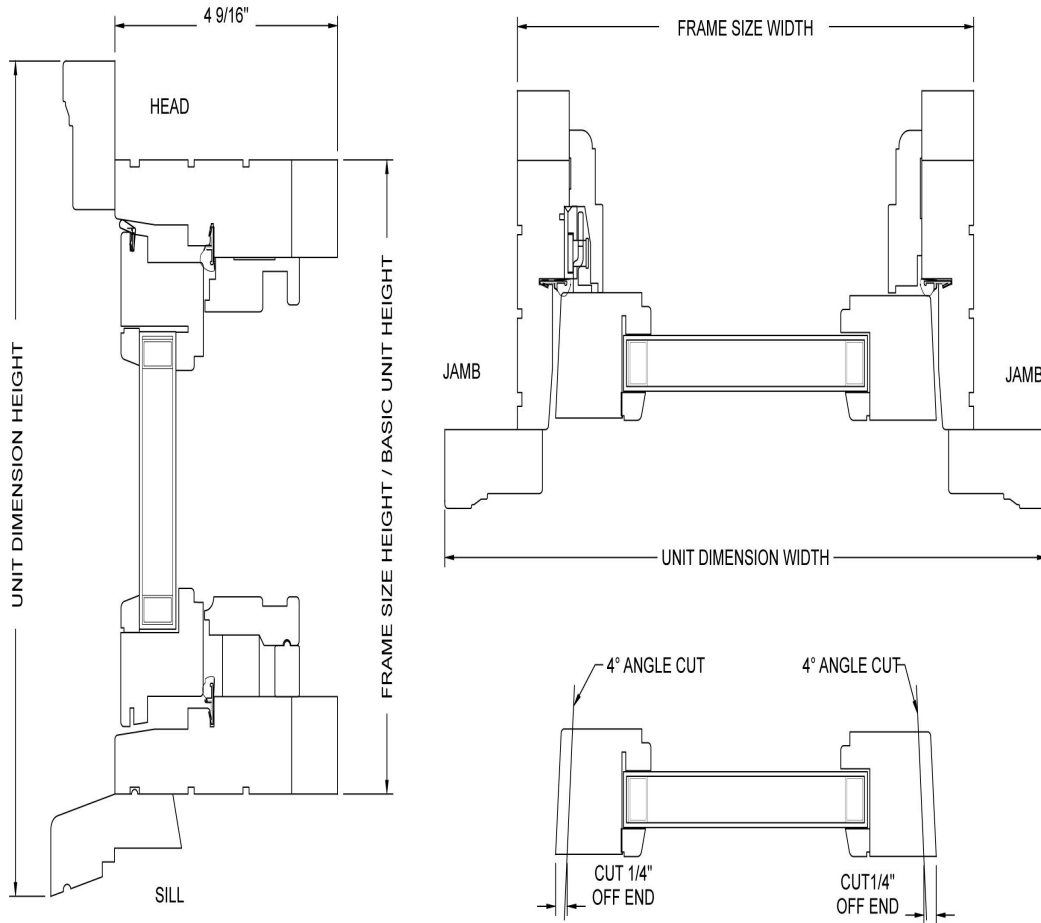


## Wood Casement Window

Cutting down a current primed casement sash to fit pre 1988 frame



Note: Corner screws must be removed from the sash prior to cutting and re-installation.

DO NOT modify Height.

E.I. Current 19" glass width unit overall sash width =  $21\text{-}15/16"$   
after  $1/4"$  cut down per side =  $21\text{-}7/16"$